

BEAR COVE (PORT HARDY) TERMINAL (Routes 10 & 40)

Routes served

Bear Cove, the most northerly terminal on Vancouver Island is situated 7 km from Port Hardy. Bear Cove provides service for the following routes:

Scheduled Service

Route 10: Bear Cove to Prince Rupert (Winter service stops in McLoughlin Bay, Shearwater, Klemtu, and Ocean Falls)

- 1-1/2 sailings per week in winter months
- 3-1/2 sailings per week in mid-May through September

Route 40: Bear Cove, McLoughlin Bay, Shearwater, Klemtu, Bella Coola, Ocean Falls

- 0 sailings per week in winter months
- 3 sailings per week in June, July and August

Description of facilities and services

The terminal has one berth consisting of a single level, steel-decked ramp and apron complete with adjustable counterweight system on a steel ramp pontoon. The pontoon is secured with pipe guide piles. There are 4 single-sided, timber-faced, floating leads (3 on the right side of the berth, 1 on the left, looking seaward).

Current Berth Load Limit:

- 63,500 kg GVW; maximum 8 loaded axles

Shore based facilities consist of a Terminal Building, storage building, 2 toll booths and a passenger waiting room/mechanical room. The vehicle holding compound has a capacity of approx. 110 vehicles with additional space for drop trailer parking. There are 100 pay parking spaces south of the holding compound, up to half of which are used by the crew. Storm sewers with oil/water separators were added at the same time as paving and lining of the pay parking area in 2001/2002. Also in 2002, cathodic protection was installed on the pontoon, the pontoon guidelines, and the floating lead piles.

Property Ownership

BC Ferries is the registered owner of a 60-year lease. The lease is a public document and can be viewed at the following website:

http://www.bcferrries.com/about/docs/cfa-land_leases.html

Situational Assessment

Conditions

The terminal was constructed in 1984 and has undergone minor repairs, upgrading and routine maintenance.

The right inner floating lead is secured with pipe guide-piles. These guide-piles, the ramp, and the pontoon guide-piles, and the floating leads were all cathodically protected in 2003.

In 2003/04, the ramp deck was replaced and ramp and apron hydraulics were upgraded to provide improved geometry for vehicle access to the multiple vessels accessing the berth. In 2004/05, the ramp was recoated which will extend its' service life for many years.

The Condition Survey was completed in May 2004 indicating that the ramp and pontoon are in good condition with no significant issues identified and master planning is scheduled for 2007/2008.

Implementation

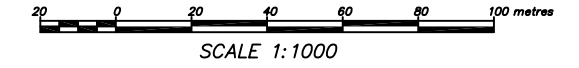
There are no capital projects identified for Bear Cove in the current 15 year Capital Plan.



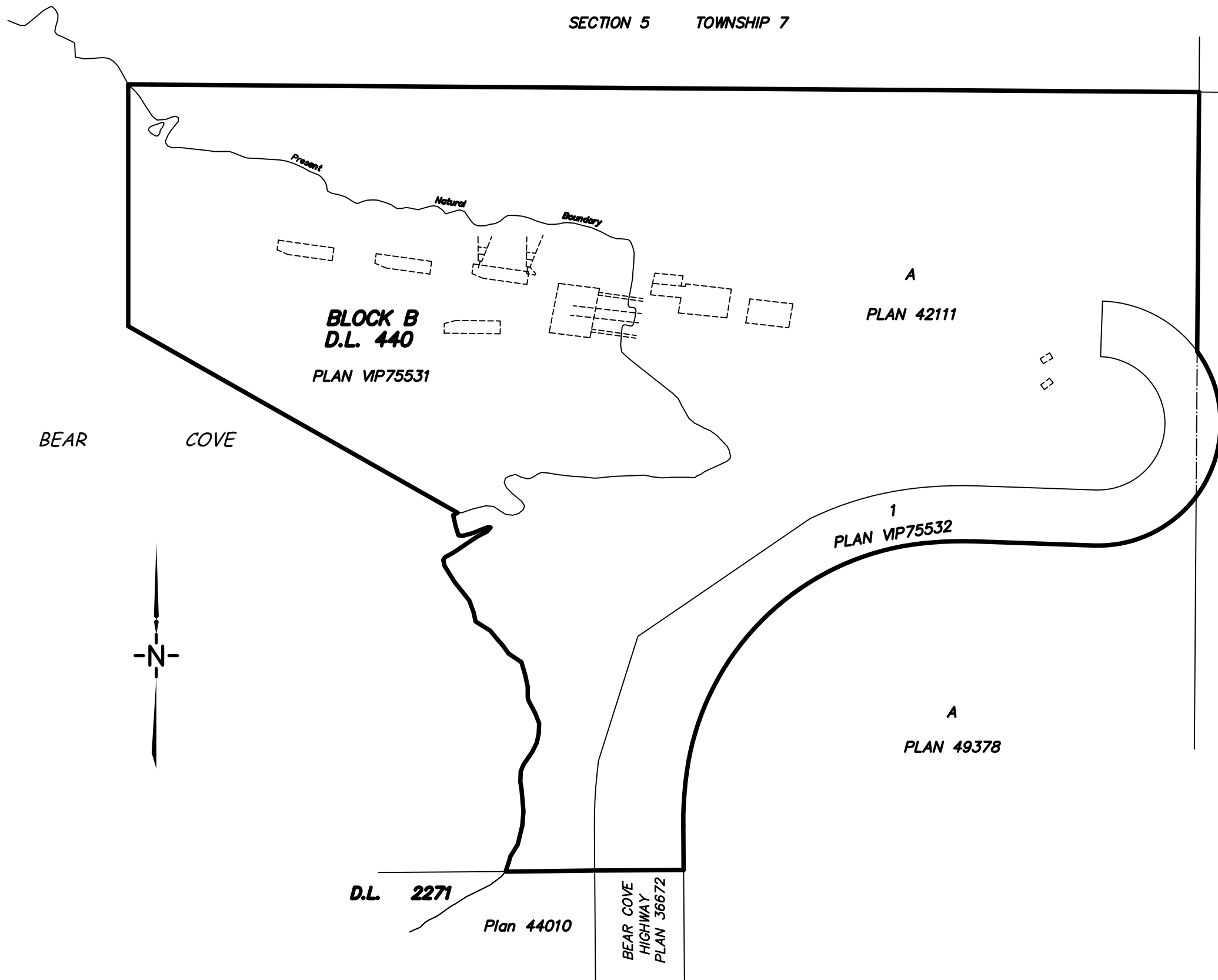
SECTION 5 TOWNSHIP 7

COMPOSITE PLAN OF BEAR COVE FERRY TERMINAL

B.C.G.S. 92L.073



BOOK OF REFERENCE	
Parcel	Area
BLOCK B, PLAN VP75531	2.72 ha
LOT A, PLAN 42111	6.54 ha
LOT 1, PLAN VP75532	1.26 ha



N.E. 1/4

SEC. 32

TP. 6